



INFORMATIONAL BROCHURE

Weld RE-5J School District is continuously expanding opportunities for students. Our Career and Technical Education (CTE) Pathways empower learners to discover their passions and talents through real-world experiences which connect learning to life. From elementary school through to graduation day, Weld RE-5J students are preparing for success, wherever their dreams may take them:

- Whether that is through further training
 - College, Community College, Trade School
 - Degree
 - Industry Certifications
 - Apprenticeships
- Or by earning industry certifications in high school.

FOR FURTHER INFORMATION, CONTACT A CTE ADMINISTRATOR:

RON HRUBY

Director of CTE

Phone: 970-587-6092

Email: rhruby@weldre5j.org

REBECCA ALBERT VOLLRATH

Co-Principal, Roosevelt High School

Phone: (970) 587-6097

Email: rebecca.albert@weldre5j.org

ASPEN SANDERS

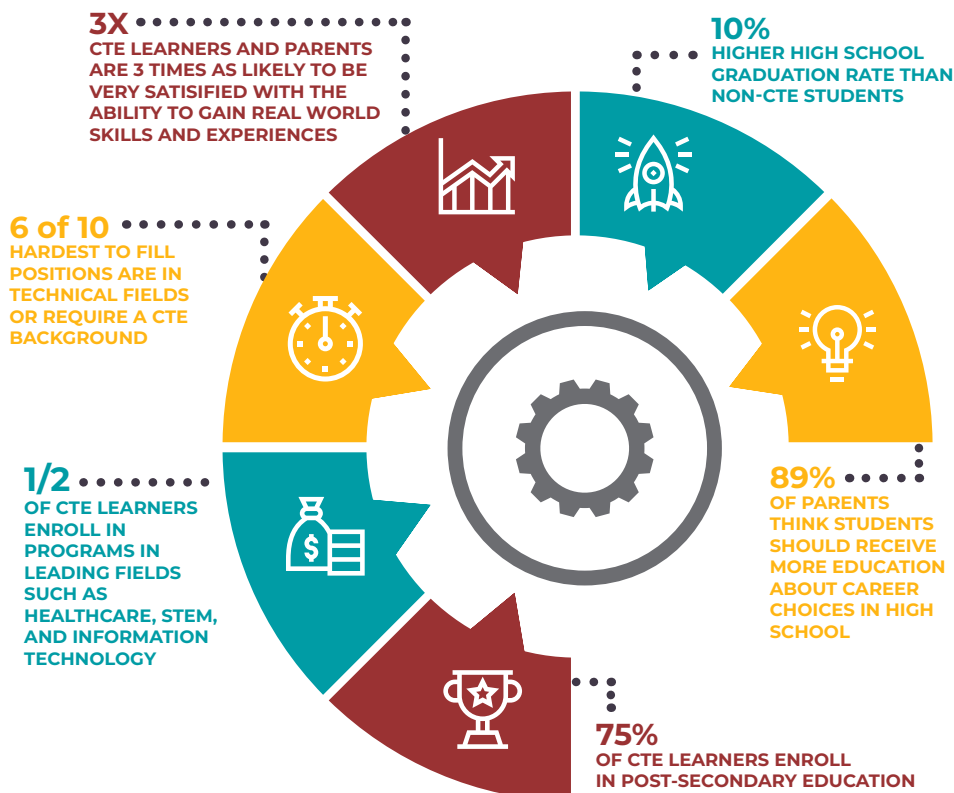
Principal, Milliken Middle School

Phone: 970-587-6304

Email: aspen.sanders@weldre5j.org

CTE BY THE NUMBERS

CTE PROVIDES AN ACADEMIC FOUNDATION, TECHNICAL SKILLS, AND HANDS-ON EXPERIENCE TO GET LEARNERS READY FOR THE REAL WORLD.

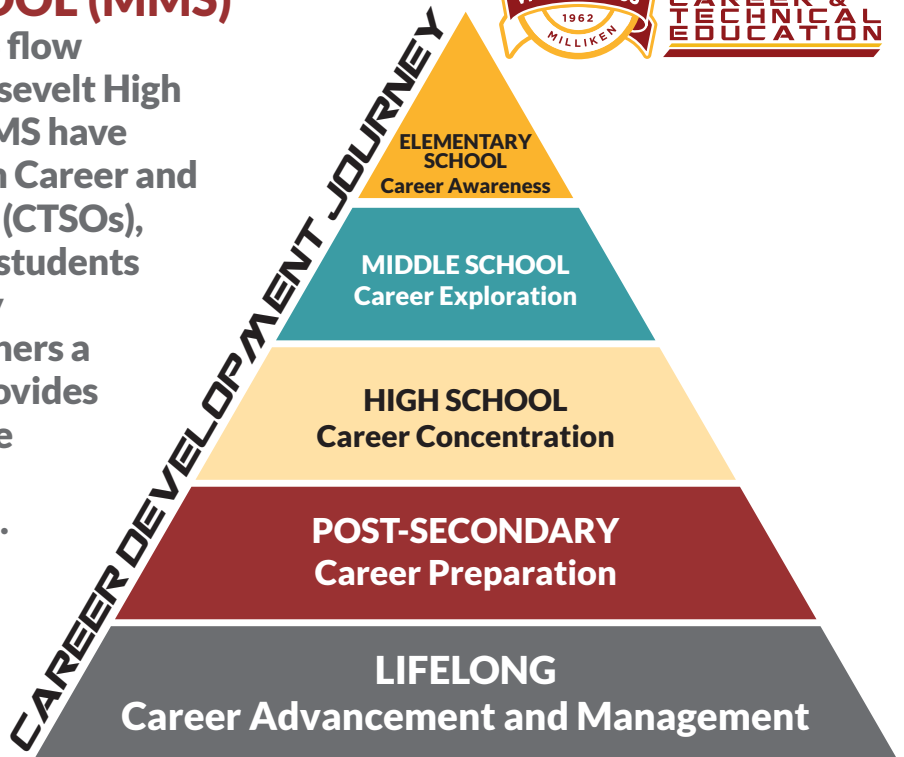


DID YOU KNOW?

CTE students can earn college credits, obtain industry certifications, and gain work experience while still in high school.

EXPLORE CAREER INTERESTS AT MILLIKEN MIDDLE SCHOOL (MMS)

CTE exploratory courses at MMS flow seamlessly into Pathways at Roosevelt High School (RHS). CTE students at MMS have leadership opportunities through Career and Technical Student Organizations (CTSOs), learn directly from teachers and students at RHS, and engage with industry professionals. This gives our learners a jump-start on high school and provides risk-free opportunities to explore career interests before making a commitment to a particular field.



2021-2022 CTE course offerings include:

- Intro to Agriculture • Intro to Business
- Digital Arts • Computer Science Foundations (Coding)
- Principles of Engineering and Technology • Culinary Nutrition
- Childhood & Adolescent Development
- Intro to Health Science • Principles of Construction

Students at MMS can begin CTE Pathways before they enter high school!

CONTACT:

ASPEN SANDERS

Principal, Milliken Middle School

Phone: 970-587- 6304

Email: aspensanders@weldre5j.org

www.weldre5j.k12.co.us/milliken-mid





ROOSEVELT ROUGHRIDERS



CTE STUDENTS AT RHS CAN SAVE MONEY AND GET A HEAD START ON FURTHER EDUCATION AND CAREERS

Roosevelt High School students have multiple opportunities to develop valuable skills while gaining work experience, college credits, and industry certifications while still in high school. These options can save on college tuition costs while enabling students to reach their goals faster.

ELIGIBILITY

Any current 9-12 grade students may register for CTE courses offered at Roosevelt High School.

COST

There are no tuition costs. However, some classes require a small fee and/or specialized materials.

GRADUATION REQUIREMENTS

A minimum of 1.0 CTE credit is required to graduate from Roosevelt High School.

EARN COLLEGE CREDITS IN HIGH SCHOOL

DUAL ENROLLMENT

RHS has established partnerships with both Aims Community College and the University of Northern Colorado. Through these partnerships, we are able to offer our students college-level courses on the RHS Campus or within the community. These courses enable students to earn high school credit as well as college credit.

CONCURRENT ENROLLMENT

Students may request to take coursework at Aims Community College or other institutions of higher learning, applying credit toward high school graduation requirements and toward a college degree program.

AIMS CAREER ACADEMY

Eligible students can apply to participate in the Aims Community College Career Academy program which enables high school students to take college courses in the participating CTE programs. This is a concurrent-enrollment program where students earn credits toward high school graduation and college credits at the same time. All college fees are paid for by the school district. The student is responsible for transportation to the college campus.

EARN INDUSTRY CERTIFICATIONS IN HIGH SCHOOL

The process of earning an industry certification enables students to experience the real-world demands of work in a practical way. Industry certifications can increase job prospects, marketability to employers, and employability as well as options for post-secondary education.

ENGAGE IN CTE STUDENT ORGANIZATIONS (CTSOs)

All CTE students at RHS have the opportunity to join a CTSO related to their pathway. CTSOs provide opportunities for students to compete at conferences, develop leadership skills, and gain industry insights. According to the Association for Career and Technical Education, "CTSOs play an important part in preparing young people to become productive citizens and to assume roles of leadership in their communities. These organizations provide a unique program of career and leadership development, motivation, and recognition for secondary and post-secondary students."

ROOSEVELT HIGH SCHOOL CAREER & TECHNICAL EDUCATION (CTE) PROGRAMMING GIVES ALL STUDENTS A COMPETITIVE ADVANTAGE AS THEY ENTER COLLEGE, CAREER, OR THE MILITARY.

STUDENTS IN CTE PATHWAYS:

Explore opportunities that prepare them for high-demand careers and give them an edge entering college.

Engage in authentic, hands-on learning.

Equip themselves with relevant, rigorous, and practical skills.

CAREER AND TECHNICAL EDUCATION PATHWAYS

Our CTE Pathways are designed to ensure our students meet Post-secondary and Workforce Readiness competencies and are ready to transition to further their education or enter the workforce. Industry level certifications are offered in each CTE pathway.

CURRENT PATHWAYS AT RHS:

Agriculture

Business

Animal Science

Plant Science

Power/Structures & Technology

Energy

Digital Media & Communications

Design & Media Arts

Coding

Engineering

Business Administration

General Construction

Hospitality & Food Production

Education & Training

Athletic Training

General Health Science

Legal/Judicial

WORK-BASED LEARNING OPPORTUNITIES:

• Internships • Mentorships • Entrepreneur Projects

Career preparatory opportunities for Weld RE-5J students are continually expanding based on student interests and industry trends.

CONTACT:

REBECCA ALBERT VOLLRATH

Co-Principal, Roosevelt High School

Phone: (970) 587-6097

Email: rebecca.albert@weldre5j.org

www.weldre5j.k12.co.us/roosevelt





READY FOR THE FUTURE



Career & Technical Education (CTE) is an educational option that provides learners with the knowledge and skills they need to be prepared for college and careers. It gives purpose to learning by emphasizing real-world skills and practical knowledge within a selected career focus.

CTE DELIVERS an Authentic High School Experience with More Value for Students



EXPLORE MORE:

<https://www.weldre5j.k12.co.us/cte>

<http://coloradostateplan.com/>

For more information about CTE in WELD RE-5J School District contact:

Ron Hruby, CTE Director

rhruby@weldre5j.org



Weld RE-5J School District | 110 S Centennial Drive, Suite A | Milliken, CO 80543

Questions? Call (970) 587-6050

or visit www.weldre5j.k12.co.us/cte/page/cte-pathways